

## POLYESTER MEDIA

MANUFACTURED BY FIBER BOND



### WHY FIBER BOND POLYESTER

- ◆ CONSISTENCY
- ◆ DRY OR TACKIFIED MEDIA
- ◆ ONE-HALF, ONE, TWO INCH
- ◆ U.L. CLASS 2
- ◆ 100% SYNTHETIC
- ◆ ROLLS, PRE-CUT PADS, POLY-PERF®

### PRODUCT CONSISTENCY

*Fiber Bond FM and FP series polyester media are manufactured at Fiber Bond.*

*The airlaid principle of Fiber Bond media is to randomly disperse fibers in all directions throughout the web. This forms a uniform, high strength media. Contaminants are trapped within the total media. True depth loading.*

### FM SERIES DRY MEDIA

*Fiber Bond FM polyester series combines quality, consistency and economy.*

*MERV 6 in a 1/2", 1" and 2" thickness.*

### FP SERIES BLUE TACK MEDIA

*The FP series has a uniform coating of tackifier in the blue air leaving side of the media. This locks trapped dirt in the media.*

*MERV 6 in a 1/2" thickness.*

*MERV 7 in a 1" and 2" thickness.*

### APPLICATIONS

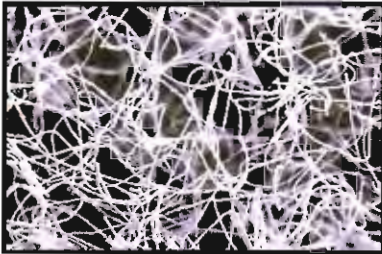
*In pad and frame or blanket use.*

- ★ STEEL MILLS
- ★ OFFICE BUILDINGS
- ★ FACTORIES
- ★ SCHOOLS
- ★ CONSTRUCTION
- ★ HOTELS

**"THE BEST FILTERS  
COME FROM THE BEST MEDIA"**

# TECHNICAL DATA

- MERV 6 & 7 - ASHRAE 52.2-1999
- Operating temperature up to 200° F.
- FM Series - Dry media, FP Series - Tackified media.
- Low initial resistance at 295 fpm.



*Random dispersion of fibers for true depth loading.*



MEDIA	TYPE	COLOR	THICKNESS	ROLL LENGTH	WEIGHT oz./yd <sup>2</sup>	DENSITY lbs/ft <sup>3</sup>	RESISTANCE 295 fpm	MERV VALUE
FM 25	DRY	ALL WHITE	1/4"	270'	3.5	0.61	0.06"	N/A
FM 50	DRY	ALL WHITE	1/2"	135'	4.2	0.44	0.09"	6
FM 100	DRY	ALL WHITE	1"	90'	5.9	0.45	0.15"	6
POLY II	DRY	YELLOW/WHITE	2"	60'	7.9	0.33	0.13"	6
FP 50	TACK	BLUE/WHITE	1/2"	135'	4.8	0.50	0.11"	6
FP 100	TACK	BLUE/WHITE	1"	90'	6.4	0.48	0.16"	7
FP 200	TACK	BLUE/WHITE	2"	60'	10.0	0.42	0.13"	7

Particle Size Removal Efficiencies Conducted by LMS Technologies (2006 and 2007)